

Public Notice

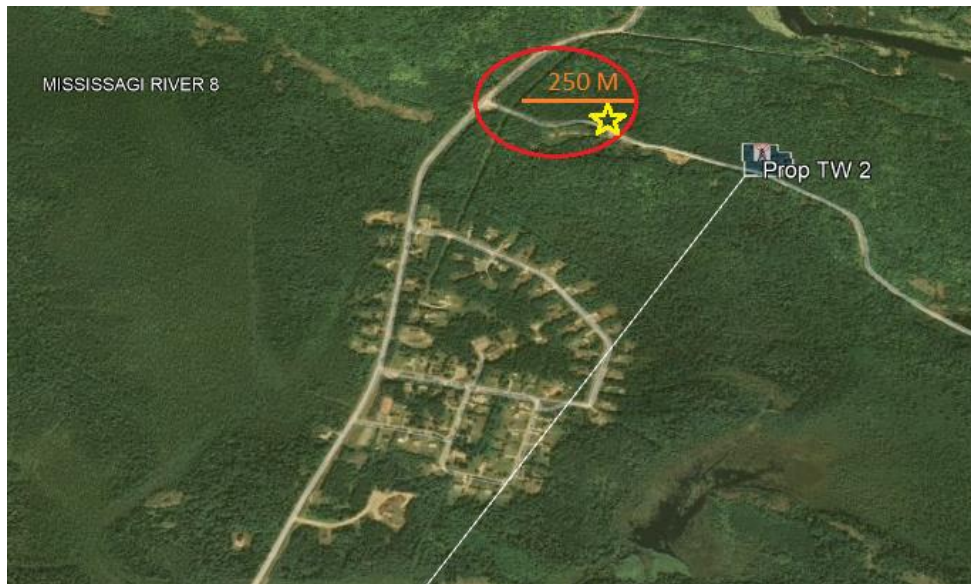
Proposed Leepfrog Telecom Radiocommunications Facility Telecommunications Tower

Leepfrog Telecom Ltd. (Leepfrog) is committed to improving broadband access to Canadian communities currently underserved. To improve service, Leepfrog is proposing to construct a 96 ft. self-supporting tower with ancillary radio equipment including a 4 ft. by 8 ft. shelter at the base of the tower. As part of the public consultation process required by Industry Science and Economic Development Canada (ISED), Leepfrog's regulator under the Radiocommunications Act, Leepfrog is inviting the public to comment on the proposed tower location before December 8, 2021. The tower is fully compliant with ISED's guidelines as found under the Client Procedures Circular CPC -2-2-03.

Tower Location: Old Landfill Site Road, Mississauga First Nation, POR-1B0

Co-ordinates: 46.21467, -82.99510

Yellow star in diagram below



Any person may comment by Close of business day on December 8, 2021 with respect to this matter

Leepfrog Contact:

George Chriss
8889 Yonge St.
Box 31008
Richmond Hill, ON L4C 0V3
regulatory@leepfrogtelecom.com